

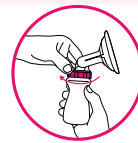
# KOLOR PLAY<sup>®</sup> KOLOR CLIP<sup>®</sup> by kitett<sup>®</sup>

## Manual breast pump

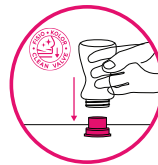
- Design developed for an optimized handling
- Ergonomic and comfortable
- Silent, easy to use and to transport
- Kolor<sup>®</sup> multi-size breast shield
- 2 phases technology  
Controlled hygiene
- "Clean Valve" technology



Screw



Insert



Clip



**KOLOR<sup>®</sup> CLIP<sup>®</sup> to convert  
KOLOR Expression kit  
into a KOLOR PLAY<sup>®</sup> manual  
breast pump**



KOLORYOU<sup>®</sup>

Download on the  
App Store

GET IT ON  
Google Play

CE 0459





## KOLOR PLAY®

KOLOR PLAY® is a manual breast pump. It is especially indicated for occasional use. It can be used to supplement an electric breast pump, in case of temporary separation or any other reason making breast-feeding impossible or insufficient.

### Descriptif

#### KOLOR® breast shield

KOLOR® breast shields of all sizes can be connected to the breast pump. Mum can therefore choose a size of breast shield adapted to her morphology and thus enjoy optimum comfort throughout extended and long-term breast-feeding.

#### Smart and easy to use

**KOLOR CLIP®** includes all the parts you will need to transform your KOLOR® Expression kit into a KOLOR PLAY® manual breast pump. You can therefore use the breast shield you may have already purchased when hiring a Fisiso or Fisiso Pro breast pump, for example.

Silent and easy to carry, in 3 gestures, the manual breast pump is ready to use.

#### Ergonomic design

The ergonomics of the KOLOR PLAY® breast pump have been specially designed for mums to simplify handling and control handle operation. The handle and feeding bottle are comfortable to use, being designed to fit neatly into mum's hands.

#### Clean Valve technology

KOLOR PLAY® is the first breast pump in the Kitett® range to benefit from the Clean Valve technology. Thanks to this innovative conception, KOLOR PLAY® helps to minimize the risk of bacterial contamination from the fingers touching parts in contact with breast milk.

#### Stimulation and expression

KOLOR PLAY® is able to reproduce the 2 phases of breast-feeding:

- stimulation,
- expression.

## Product features

#### Kitett range

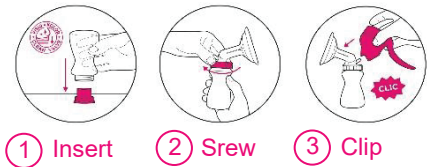
- Elements compatible with the Kitett range

#### Design

- Compact, portable breast pump
- Kolor breast shield, multi-size to adapt perfectly to breast shape
- Ergonomic handle and feeding bottle

#### Fonctions

- 2 phases: stimulation and expression
- Easy to use, assemble and clean





**Included:**

- Kolor breast shield 24mm, wide (ref - K24L)
- Clean Valve
- Collector bottle
- Pump body
- Membrane and base
- Handle
- Feeding bottle stand
- Cap for keeping feeding bottle closed and storing milk after using breast pump
- KOLOR PLAY® breast pump accessory bag (breast shield, feeding bottle, ...)



**Technical specifications**

Device class	Ila
Weight	167g with breast shield
Dimensions	190mm x 168mm x 90mm with breast shield
Suction value (nominal value)	300 hPa

**Marketed by**

Office No. 506, 5th Floor, Office Tower – B, Elante,  
Plot no. 178-178A, Ind Area, Phase I, Chandigarh

Call : +91 7341103371  
[www.sanraishop.com](http://www.sanraishop.com)